



STETSON UNIVERSITY

GUIDE TO CAMPUS RESOURCES



GO HATTERS!

Our Mission: to provide an excellent education in a creative community where learning and values meet, and to foster in students the qualities of mind and heart that will prepare them to reach their full potential as informed citizens of local communities and the world.



WWW.STETSON.EDU
386-822-7000

COMMONLY ACCESSED RESOURCES

STETSON UNIVERSITY

DELAND CAMPUS

Wellness

- Accessibility Services..... 13
- Student Counseling Services..... 19
- Hatter Pantry..... 33
- Health Services..... 35
- Wellness and Recreation (Hollis Center)..... 36

Academics

- Academic Calendar..... 11
- Academic Success..... 12
 - Tutoring
 - Academic Advising
 - Student Success Coaching
- Extenuating Academic Circumstances..... 25
 - Medical Withdrawal
 - Incomplete
 - Pass/Fail

Student Life

- Event Calendar..... 24
- Engage (Student Organizations & Clubs)..... 23
- Hatter1Card..... 31-32
 - Stetson ID
 - Meal Plans

Financial

- Bursar's Office..... 16
- Financial Aid..... 26

TABLE OF CONTENTS

STETSON UNIVERSITY

DELAND CAMPUS

Title..... i

Contents..... ii

Campus Map..... ix

Stetson Safety App..... x

Resources

Academic Calendar..... 11

<https://www.stetson.edu/administration/registrar/academic-calendars.php>

Academic Success..... 12

<https://www.stetson.edu/administration/academic-success/>

Accessibility Services Website..... 13

<https://www.stetson.edu/administration/accessibility-services/>

BEST Team..... 14

<https://www.stetson.edu/other/report-it/best.php>

Bookstore..... 15

<https://www.bkstr.com/stetsonstore/home>

Bursar's Office..... 16

<https://www.stetson.edu/administration/bursar/>

TABLE OF CONTENTS

STETSON UNIVERSITY

DELAND CAMPUS

Career and Professional Development..... 17

<https://www.stetson.edu/administration/career/>

Center for Community Engagement 18

<https://www.stetson.edu/other/community-engagement/>

Student Counseling Services..... 19

<https://www.stetson.edu/administration/student-counseling/>

Dean of Students..... 20

<https://www.stetson.edu/administration/campus-life/home/dean-of-students.php>

Office of Diversity and Inclusion..... 21

<https://www.stetson.edu/administration/odi/>

DuPont- Ball Library..... 22

<https://www2.stetson.edu/library/>

Engage..... 23

<https://stetson.campuslabs.com/engage>

Event Calendar..... 24

<https://calendar.stetson.edu/site/deland/>

TABLE OF CONTENTS

STETSON UNIVERSITY

DELAND CAMPUS

Extenuating Academic Circumstances.....	25
Financial Aid.....	26
https://www.stetson.edu/administration/financial-aid/	
Fronk Scholars.....	27
https://www.stetson.edu/administration/wellness-and-recreation/fronk-peer-influencers.php	
Gillespie Museum.....	28
https://www.stetson.edu/other/gillespie-museum/	
Green Spaces.....	29
Hand Art Center.....	30
https://www.stetson.edu/other/gillespie-museum/	
Hatter1 Card Office: Meal Plans.....	31
https://www.stetson.edu/other/hatter-one-card/meal-plan-selection-and-pricing.php	
Hatter1 Card Office: Student ID.....	32
https://www.stetson.edu/other/hatter-one-card/	

TABLE OF CONTENTS

STETSON UNIVERSITY

DELAND CAMPUS

Hatter Pantry..... 33

<https://www.stetson.edu/administration/student-counseling/Hatter-Pantry.php>

HattersCare..... 34

https://cm.maxient.com/reportingform.php?StetsonUniv&layout_id=12

Health Services..... 35

<https://www.stetson.edu/administration/health-service/>

Hollis Center..... 36

<https://www.stetson.edu/administration/wellness-and-recreation/>

Information Technology (IT)..... 37

<https://www.stetson.edu/administration/information-technology/>

IWER (Institute for Water and Environmental Resilience)..... 38

<https://www.stetson.edu/other/iwer/>

Museum of Art and Second Stage Theatre..... 39

<https://moartdeland.org/visit/>

<https://www2.stetson.edu/creative-arts/programs/theatre-arts/>

MyStetson Portal..... 40

my.stetson.edu

TABLE OF CONTENTS

STETSON UNIVERSITY

DELAND CAMPUS

PACT (Peer Advisory Council for Title IX)..... 41

<https://www.stetson.edu/administration/wellness-and-recreation/pact-home.php>

Peer Leadership Opportunities..... 42

<https://www.stetson.edu/peerleader>

Public Safety..... 43

<https://www.stetson.edu/administration/public-safety/>

Office of the Registrar..... 44

<https://www.stetson.edu/administration/registrar/>

Office of Religious and Spiritual Life..... 45

<https://www.stetson.edu/administration/religious-and-spiritual-life/>

Report It..... 46

<https://www.stetson.edu/other/report-it/>

Residential Living & Learning..... 47

<https://www.stetson.edu/administration/housing/current-students.php>

StetsonVotes..... 48

<https://www.stetson.edu/other/vote/>

TABLE OF CONTENTS

STETSON UNIVERSITY

DELAND CAMPUS

Title IX (& the BEST Team)..... 49

<https://www.stetson.edu/other/title-ix/>

WELL Team..... 50

<https://www.stetson.edu/administration/wellness-and-recreation/wellness/wellness-interns.php>

WORLD Center..... 51

<https://www.stetson.edu/other/world/>

CAMPUS MAP

Check It Out:

[Click Here](#)

STETSON UNIVERSITY
CAMPUS MAP
 DeLand Campus
 421 N. Woodland Blvd., DeLand, FL 32723

For General Info, call 386-822-7000
 For Emergencies, contact Stetson University
 Public Safety at 386-822-7300 or call 911

stetson.edu/maps

..... WALKWAY	● Resident West	● Open Parking
▬ UNIVERSITY PARKING	● Faculty/Staff	● Resident North
	● Visitor	● Stetson Cove
	● Commuter Student	● Resident East
	● Resident Central	● Resident North Apt.

STETSON UNIVERSITY
CAMPUS MAP
 DeLand Campus
 421 N. Woodland Blvd., DeLand, FL 32723

For General Info, call 386-822-7000
 For Emergencies, contact Stetson University
 Public Safety at 386-822-7300 or call 911

stetson.edu/maps

..... WALKWAY	● Resident West	● Open Parking
▬ UNIVERSITY PARKING	● Faculty/Staff	● Resident North
	● Visitor	● Stetson Cove
	● Commuter Student	● Resident East
	● Resident Central	● Resident North Apt.

Map labels include: STETSON COVE APARTMENTS, RINKER INTRAMURAL FIELD, STETSON GREEN, FOOTBALL PRACTICE FIELDS, SOCCER & LACROSSE FIELDS, STETSON DOG PARK, SANDRA STETSON AQUATIC CENTER, MELCHING FIELD AT CONRAD PARK, SPEC MARTIN MEMORIAL STADIUM.

STETSON SAFETY APP



STETSON SAFETY

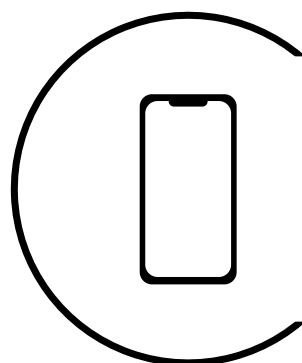
Our Service

The Stetson Safety App is found in the Apple App Store for iOS devices or Google Play Store for Androids by searching "Stetson Safety."

Features include

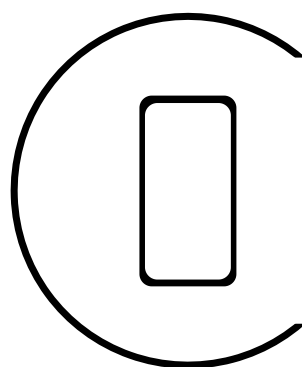
- The Stetson News Feed with campus headlines, the latest weather information and Hatter Alerts, Stetson's emergency notification system.
- Mobile Blue Light: Tap the button to simultaneously send your location and call Public Safety.
- Friend Walk: Send your location in real-time to a friend so they can watch you walk to your destination.
- Report a Tip: Send Public Safety an anonymous tip by text

Download



iOS

Download the
App Now



Android

Download the
App Now

ACADEMIC CALENDAR

Fall Semester	Fall 2023
International Student Move-in	Tuesday, August 15
International Student Orientation	Wednesday-Friday, August 16-18
Residence Halls Open (New Students)	Saturday, August 19
Student Orientation Begins (FOCUS)	Saturday, August 19
Residence Halls Open (All Students)	Sunday, August 20
SEM Classes	Monday, August 21
University Convocation	Wednesday, August 23
Registration	Thursday, August 24
Verification Begins	Thursday, August 24 (Monday, August 21 for FSEM classes)
Deadline to ADD a full-term course	Wednesday, August 30
Deadline to DROP a full-term course without aid penalty	Wednesday, August 30
Deadline to CHANGE Meal Plans	Wednesday, August 30
Verification Due 10:00 a.m.	Thursday, August 31
University Holiday (No Classes)	Monday, September 4
Deadline to Submit Academic Internship Application in MyStetson-Undergraduate	Wednesday, September 6*

Our Service

Access Stetson's Undergraduate and Graduate Calendars for important information about deadlines and events!

Click to view graduation dates, start and end of classes, add/drop deadlines, Stetson Showcase and Values Day dates, deadlines for meal plans, residential hall closing dates and university holidays!

Resources

All Calendars

The above link will navigate to the following calendars:

- Fall, Spring and Summer Undergraduate Calendar
- Counselor Education Calendar
- Graduate Education Calendars
- MFA Calendar
- MBA/ MaCC Calendar
- College of Law Calendar

ACADEMIC SUCCESS



Our Service

Academic success provides opportunities for students to reach their individual goals in the higher education environment by ensuring equal access and skills-based coaching and tutoring.

Location

Located on the second floor of the duPont-Ball Library in the Hollis Family Student Success Center (HFSSC).

Hours

Academic Success staff are available **8:00 am- 4:30 pm**. The Success Center is open during library hours.

Resources

[Homepage](#)

[Tutoring](#)

[Academic Advising](#)

[Student Success Coaching](#)

[Stetson Catalog](#)

Contact Info:

academicsuccess@stetson.edu

386 822-7345

[Staff Directory](#)

ACCESSIBILITY SERVICES



Our Service

The accommodation process, for academic, residential life, and dietary accommodations, is a simple process used to gather information and documentation that supports the presence of a disability that requires necessary accommodations to create a barrier-free environment while at Stetson University.

Location

On the 2nd floor of the duPont-Ball Library.

Hours

Staff are available
8:00 am- 4:30 pm

Resources

[New to Accomodations](#)

[Renewing Accomodations](#)

[Frequently Asked Questions](#)

Contact Info:

asc@stetson.edu

386-822-7127

BEST TEAM



Our Service

Stetson's Bias Education and Support Team provides students with an opportunity to receive education, support, and resolution in response to perceived biases. Our goal is to empower students to find resolutions on their own, to provide support and education when needed, to foster personal and intellectual development, and to promote resiliency.

The BEST process is **not** punitive. Instead, BEST provides all students with opportunities to be heard and supported and creates space to process, gain understanding, and make a plan to resolve a situation.

Resources

[Homepage](#)

Learn more about the BEST Team's process and staff members!

[File a BEST Report](#)

To file a BEST report, visit the Stetson Report It form and select 'Bias Education Support Team' under 'Type of Report'

UNIVERSITY BOOK STORE



Our Service

Stetson University's bookstores are our stores on campus where you can shop for textbooks, course materials, Stetson apparel, supplies, gifts and fan gear.



Location

Located on the first floor of
Stetson's Carlton Union Building

131 E Minnesota Ave, DeLand, FL
32723

Resources

Bookstore Website

Hours

Mon 8:00 am- 5:00 pm

Tue 8:00 am- 5:00 pm

Wed 8:00 am- 5:00 pm

Thurs 8:00 am- 5:00 pm

Fri 8:00 am- 4:00 pm

Sat 11:00 am- 2:00 pm

Sun CLOSED

Contact Info:

stetsonbookstore@bkstr.com

386 822-7160

BURSAR'S OFFICE



Our Service

The bursar generates bills and collects tuition, fees, campus housing, meal plan payments and other university-related charges. Any questions related to billing, tax forms and student accounts can be directed here!

Location

Located as a part of the One Stop office, second floor of the Rinker Welcome Center

Hours

The hours are Monday- Friday
8:00 a.m. - 4:30 p.m.

Resources

[Homepage](#)

[Understanding Your Bill](#)

[Tuition and Costs](#)

Contact Info:

stuaccts@stetson.edu

386-822-7050

CAREER & PROFESSIONAL DEVELOPMENT



Our Services

Career and Professional Development (CaPD) supports students and alumni with all areas related to professional development. From applying to jobs and internships, crafting resumes/cover letters, leveraging LinkedIn, networking, to interviewing they are excited to help you reach your goals!

Location

Rinker Welcome Center
Second Floor, Room 205

Resources

[CaPD Homepage](#)

[HatterJobs](#)

- Apply to on-campus jobs, internships, and full-time/part-time opportunities specifically for Stetson students and alumni.
- Receive online resume and cover letter reviews.
- Access your Pathways to Career Success.
- Schedule appointments with members of the career team.
- Access the CaPD calendar of events!

Contact Info:

career@stetson.edu

386-822-7315

[Staff Directory](#)

CENTER FOR COMMUNITY ENGAGEMENT



Our Services

The Center for Community Engagement's mission is to create opportunities for student learning through community impact – utilizing internships, research, and projects that align students' academic and career goals with the goals of our community partners.

The CCE plays the lead institutional role in directing a nationally recognized campus-wide community engagement program that is delivered through both curricular and co-curricular avenues.

Location

Carlton Union Building
Second Floor
CUB 269-263

Resources

[CCE Homepage](#)

[Community Engaged Learning](#)

[Values Day](#)

[Dialogue Events](#)

cultural credit events

[Bonner Program](#)

[Community Partner Handbook](#)

Contact Info:

cce@stetson.edu

bonner@stetson.edu

[Staff Directory](#)

COUNSELING SERVICES



Our Service

Student counseling services is a free and confidential resource for Stetson students. Individual counseling sessions are available. Other services offered includes campus outreach, mental health workshops, and community referrals. (Not available to faculty or staff).

Location

Located in Griffith hall. North of the CUB and located near the Hollis Center

Hours

Monday - Friday
8:00 am- 12:00 pm
& 1:00 pm - 4:30 pm

Closed Daily 12:00 - 1:00 pm

Resources

[Website](#)

[Emergency Resources](#)

[Instagram](#)

[@stetsonu_scs](#)

Contact Info:

counseling@stetson.edu

386-822-8900

[Meet the Counselors](#)

Volusia County Crisis

Response Team:

(available 24/7)

386-822-8740

DEAN OF STUDENTS AND HATTERS-CARE



Our Service

Dean of Students, Lynn Schoenberg, is here to help you! Come visit during open Office Hours, every Tuesday 12-1, in front of the CUB. Your Dean of Students is here to talk about anything regarding your Stetson experience!

Office Hours

Tuesday

12:00 p.m.- 1:00 p.m.

In front of the CUB

HattersCare

Concerned about a friend or peer?

Submit a report to get them in touch with HattersCare, a support network for students facing challenges.

[HattersCare Form](#)

Contact Info:

Dean of Students:
Lynn Schoenberg

lschoenb@stetson.edu

Assistant Director of Student Support: Liana Natochy

lnatochy@stetson.edu

OFFICE OF DIVERSITY & INCLUSION



Our Service

Housed in the Cross Cultural Center (Tri-C), Stetson's Office of Diversity and Inclusion is committed to providing a comfortable and safe place for under-represented students on campus as well as educate on matters of race and ethnicity, gender, sexuality, religion, socioeconomic status and ability

Location

Cross Cultural Center
145 E. Michigan Avenue

Hours

Mon- Sun
8:00 a.m. - Midnight

Resources

[ODI Website](#)

[Multicultural Student Council](#)

[WISE Program](#)

[SafeZone Program](#)

Contact Info:

tri-c@stetson.edu

386 822-7401

DUPONT- BALL LIBRARY



Our Service

Access thousands of articles, books and more online as well as physical books, DVDs, equipment and other media in the duPont-Ball Library! But the library isn't just a static building full of books. We offer numerous services to help ease and enhance your studying experience!

Location

Located at the heart of campus just off of Palm court, between Sage and Elizabeth Hall

Hours

Mon - Thurs: 8 a.m. to Midnight
Friday: 8 a.m. to 6 p.m.
Saturday: 10 a.m. to 6 p.m.
Sunday: 11 a.m. to Midnight

Resources

[Website](#)

[Maps and Virtual Tour](#)

[Library Spaces \(Study Rooms\)](#)

[Research Guides](#)

[Archives](#)

[Printing](#)

*Click to submit a print job which can be released from any printer in the library for **FREE!***

(24 hour printer access also available in the lower level of the library, accessible through the Nemecc courtyard)

Contact Info:

libref@stetson.edu

386-747-9028

[Staff Directory](#)

ENGAGE

(STUDENT ORGANIZATIONS AND INVOLVEMENT)

Our Service

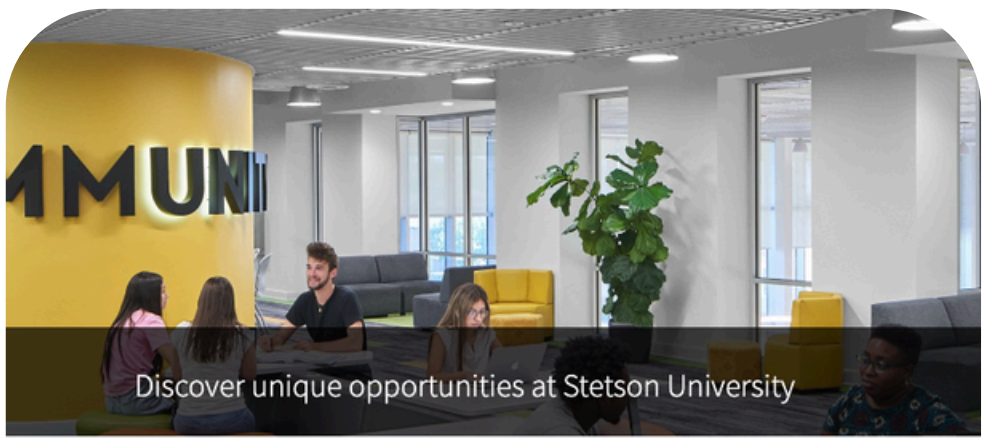
Stetson's online site to find organizations, attend events, track your involvement and more! Find clubs that match your interests and values and events that excite you on Engage!

Resources

[Engage Home Page](#)

[Find Organizations](#)

[Find Events](#)



Discover unique opportunities at Stetson University

Search Events, Organizations, and News Articles

Inside the commUN



 Hillel at Stetson University

 Asian Pacific American Coalition

 Baptist Collegiate Fellowship


 Environmental Law Society

 Black Student Union

 Hatter Productions

 Career and Professional Development

 Hatters on the Run

 Alpha Chi Omega

 Kaleidoscope

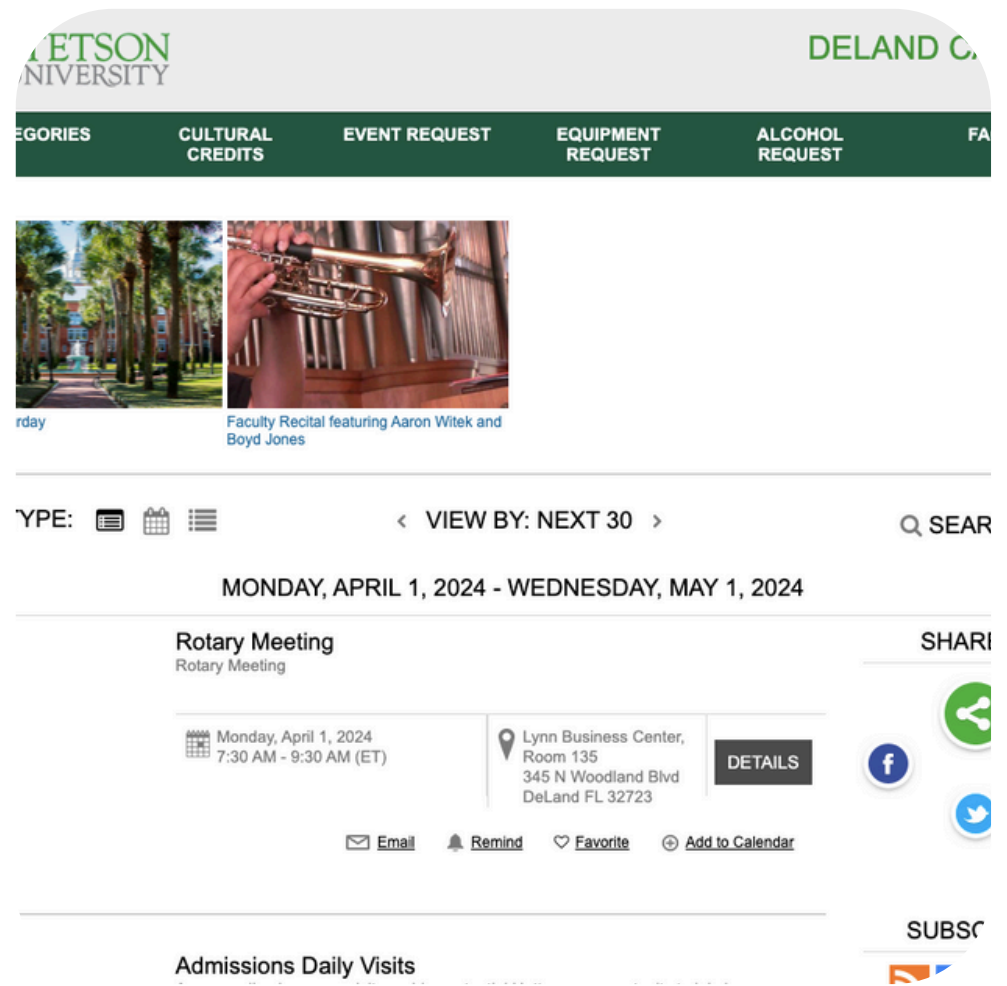
And many more!

EVENT CALENDAR

Our Service

Visit the Stetson Event Calendar for date, time and location of all campus events! Attend the meeting of a new club, join in on free wellness programming or stop by for a campus celebration, all information can be found on the calendar!

You can also use this site to schedule your own student organization event, request equipment and check out upcoming cultural credit opportunities.



Resources

[Homepage](#)

[Cultural Credit Calendar](#)

[Equipment Request](#)

[Frequently Asked Questions](#)
[FAQs](#)

EXTENUATING ACADEMIC CIRCUMSTANCES



Our Service

Life and higher education are full of challenges!

Those challenges don't stop when a student comes to Stetson, and sometimes different situations require flexibility and grace.

Look through the following options to learn more about different academic circumstances that may be helpful to you if you're going through a challenging time.

Resources

Medical Withdrawal

If you're facing a health challenge, medical withdrawal allows you to temporarily withdraw from the university and re-enter when you've recovered, giving you time to focus on your health.

Incomplete Policy

Pass/Fail Policy

FINANCIAL AID

Our Service

The Student Financial Aid team is available to assist you and your family in understanding the various financial aid options. Be sure to complete your FAFSA and CSS profile to get as accurate a picture of your financial aid options as possible.

Location

Located as part of the Stetson One Stop Office in the Rinker Welcome Center

Hours

Monday - Friday
8 a.m. to 4:30 p.m.



**MAKE STETSON A
REALITY**

- **SUBMIT THE
CSS PROFILE**
STETSON'S CODE: 5630
- **FILE THE FAFSA**
STETSON'S CODE: 001531

If you apply to Stetson University via our Early Decision or Early Action I decision plan and submit your financial aid application by November 1, you are eligible to receive a **\$3,000 early filing award**

Resources

[Homepage](#)

[Apply to the FAFSA](#)

[Explore Scholarships](#)

Contact Info:

finaid@stetson.edu

386 822-7100

** Schedule a meeting through
SSC in your MyStetson Portal **

FRONK SCHOLARS



Our Service

The Fronk Scholars facilitate presentations, workshops, posters, face-to-face outreach, Narcan training, and more to address drug abuse at Stetson. An effort to change the perceived use of these drugs through social norm campaigns and infographics also provides the student population with necessary information on drug misuse and abuse. The goal for this program is to make a real impact on how students perceive the danger of gateway drugs.

Location

Operating from the Resource
Center of the Hollis Center

Resources

[Homepage](#)

[Drug and Opioid Use on
Campus Infographic](#)

[How to Help](#)

[Stetson Medical Amnesty
Policy](#)

[How to Administer Narcan](#)

Contact Info:

lahancock@stetson.edu

386 822-7237

GILLESPIE MUSEUM



Our Service

Daily Cultural Credits!

The Gillespie Museum features one of the premier historic mineral collections in the southeast, and seasonally changing exhibits on an array of earth science and natural history topics. With native ecology information, research spaces, multi-use eco-areas across its grounds, and a dedication to inspired environmental programming, the Gillespie has become a center for science education on campus and beyond. The Gillespie is an excellent resource for passionate science majors or other students interested in the museum or their after hours programming (learn more at the adjacent links)!

Location

234 E Michigan Ave,
DeLand

Hours

Tuesday- Friday
10:00 am - 4:00 pm

Resources

[Homepage](#)

[Exhibits](#)

[Events and News](#)

[Outdoor Resources](#)

[Educational Resources](#)

[Volusia Sandhill Ecosystem](#)

Contact Info:

[About the Museum & Contact](#)

gillespie@stetson.edu

386 822-7330

GREEN SPACES



Our Service

For environmental studies/ sciences students or other students interested in exploring green spaces on or around campus, the following resources can help guide you toward interacting with Stetson and DeLand's natural environment!

Resources

[Volusia County Parks and Trails App](#)

[Florida Aquatic Gems Site](#)

[Environmental Sustainability Homepage](#)

[Stetson Environmental Fellows](#)

HAND ART CENTER



Our Service

Home to Stetson's Permanent Art Collection, the Homer and Dolly Hand Art Center hosts year-round art exhibitions and events. The center features a seminar room used for classes and study, and art preparation areas used for hands-on training in museum and curatorial practices. Along with Elsewhere Studio and Gallery DuPont, the Hand celebrates student-led projects with an art club, juried exhibitions, and the Creative Arts Seniors Exhibition. Visit us today!

Location

Located in Palm Court between the DuPont Ball Library and Sampson Hall

Hours

Tuesday to Friday: 11 a.m. - 4 p.m.
Saturday: Noon - 4 p.m.

Resources

[Homepage](#)

[Exhibit Calendar & Website](#)

[Instagram](#)

[Facebook](#)

[Youtube](#)

Contact Info:

386-822-7270

handartcenter@stetson.edu

HATTER1 CARD OFFICE: MEAL PLANS



Our Service

Stetson University Dining Services knows the hectic life of a college student. It can be difficult to squeeze in a proper meal between classes and activities, but they are here to help. The dining locations are near the residence halls and classrooms with hours that are convenient for our students. They understand that each student has different needs and eating habits. They have implemented a food nutrition analysis program, are offering more low-fat, vegetarian and vegan meals, created more flexibility with meal plans, and continue to maintain the highest level of quality food and customer service.

Location

Hatter1 Card Office for Meal Plans
University Hall
644 N Woodland Blvd, DeLand

Dining Services Office
Located in the CUB next to the
University Bookstore

Resources

Meal Plan Options

GET Mobile App

To Check Your HatterBucks Balance

Meal Plan FAQs

Dining Services Website

See What's Open and What's On The Menu

Contact Info:

For Meal Plan Concerns:
hatter1card@stetson.edu
386-822-7782

For Dining Services:
stetsondining@stetson.edu
386-822-8780

HATTER1 CARD OFFICE: STUDENT ID

Our Service

Your Hatter1 Card will act as your student ID on campus. Always keep it on you so you can access buildings on campus, utilize your meal plan, make purchases in the bookstore, pick up from the post office and even gain discounts at local businesses downtown!

Locations

Hatter1 Card Office

University Hall
644 N Woodland Blvd,
DeLand



Resources

Homepage

Additional Hatter1 Card Uses

- Utilizing your Hatterbucks on or near campus with partners Jimmy John's and Dominoes
- Gain access into the Hollis Center
- Track your Cultural Credits
- Attend athletic events, student events and concerts
- Reserve books or check out digital arts equipment at the library

** If your Hatter1 Card is lost or stolen, be sure to report it to Public Safety and visit the Hatter1 Card Office to receive a new one. Newly printed IDs cost \$20 **

Contact Info:

hatter1card@stetson.edu

386-822-7782

HATTER PANTRY

Our Service

A free and confidential resource, The food pantries keep non-perishable food items stocked through the generosity and donations of Stetson's faculty, staff and students. In addition to food, the pantries also provide toiletries. They try to meet dietary needs (vegan, gluten-free, etc.). If there is an unmet food need, please let them know.

Locations

Located in Griffith Hall with Counseling Services &
Second Location in Cross Cultural Center on Michigan Ave

Hours

Griffith Hall Location

Monday - Friday
8:00 am - 12:00 pm & 1:00 pm - 4:30 pm

Tri-C Location

8:00 am - Midnight (Also Accessible During University Breaks!)



HATTER FOOD PANTRY

The Hatter Food Pantry is a resource for students on campus to have free access to non-perishable food items. It serves as a confidential, emergency resource.

Location

The Pantry can be found at Student Counseling Services in Griffith Hall open Mon-Fri 8:30am-4:30pm and closed 12pm-1pm. The other location is at the Cross-Cultural Center (Tri-C) during office hours, which are daily from 8am-midnight.

Donations

Students can find when available both food items and toiletries at the Pantry. Donations are always welcome and can be made at any time by contacting Nicole Currie or Student Counseling Services.

After hours donations can be left at Public Safety.

Contacts

Nicole Currie: ncurrie@stetson.edu

Dr. Rajni Shankar-Brown: rshankar@stetson.edu

Student Counseling Services:
counseling@stetson.edu or (386) 822-8900

Cross Cultural Center:
tri-c@stetson.edu or (386) 822-7402

Resources

Hatter Pantry

To utilize the food pantries simply stop by Griffith Hall or the Cross Cultural Center (Tri-C) and scan the QR code.

Donations

Hatter Pantry offers and accept non-perishables and personal care/toiletry items, as well as refrigerated, fresh, and frozen goods.

To Donate Online

To donate to *Hatters Helping Hatters Food Pantry*, contact Nicole Currie at ncurrie@stetson.edu

Contact Info:

counseling@stetson.edu

386-822-8900

HATTERS CARE



Our Service

If you are concerned about a friend or peer, you can submit a HattersCare report! HattersCare is a network of staff who are here to help support students facing challenges. These challenges can range from mental and physical wellbeing to family and financial concerns.

HattersCare is operated through the Dean of Students and their staff are here to help you achieve your academic and co-curricular goals and make informed decisions about your Stetson experience.

Resources

HattersCare Form

You can reach the HattersCare form here or through the Dean of Students homepage! HattersCare is not punitive, and a friend you're worried about will not get in trouble if you report them to HattersCare.

Students are able to submit anonymously and will not ever get in trouble for trying to support a friend!

Dean of Students Homepage

HattersCare is supported by the Dean of Students office! Visit the Dean of Students page in this guide to learn more about them!

If the situation you are facing is urgent, reach out to Public Safety at 386-822-7300

If the situation is an emergency, please call 911

HEALTH SERVICES



Our Service

Stetson Health Service's provides quality health care that is appropriate, affordable and accessible to students, employees and employee dependents (age 16 and up). In partnership with Advent Health we provide primary care to students and employees. Patients are seen by appointment and services are charged through insurance with self-pay discounted rates available for the uninsured.

Location

Located in Griffith Hall, the entrance is to the right of the entrance to the counseling center

Hours

Monday- Friday
8:00 am - 12:00 pm
& 1:00 pm - 4:30 pm

Resources

Website

Emergency Information

Additional Services:

- Annual physicals
- care for non-emergent illnesses such as sore throats, upset stomachs, rash, allergies, urinary tract infections, cuts, sprains/strains.
- STI testing and birth control counseling
- free confidential pregnancy testing.

Contact Info:

healthservices@stetson.edu

386-822-8150

Staff Directory

HOLLIS CENTER



Our Service

Home of the campus gym, pool, fitness classes, basketball court and WELL Team, Stetson's Hollis Center is the place for all things wellness. Hollis' services are free to Stetson students, faculty and staff.

Location

Located on Bert Fish Drive, Beside the Carlton Union Building (CUB)

Hours

Mon - Thurs: 7 a.m. - 10 p.m.
Friday: 7 a.m. - 8 p.m.
Sat - Sun: 1 p.m. - 5 p.m.

Resources

[Wellness and Recreation](#)

[Fitness Class Information](#)

[Intramural & Club Sports](#)

[Outdoor Adventure \(SOAR\)](#)

[Waiver for Gym Use:](#)

Scroll to access the mandatory liability waiver for facility use

Contact Info:

wellnessandrec@stetson.edu

386-822-7237

INFORMATION TECHNOLOGY (IT)



Our Service

Available at either the IT help desk or able to come to your location in a classroom or lab, Stetson IT services are here to help with all of your technology related needs.

Location

Located in the Lynn Business Center at 345 N. Woodland Blvd.

Hours

Semester Hours

Mon - Thurs: 8 a.m. - 8 p.m.
Friday: 8 a.m. - 4:30 p.m.

Summer Hours

Mon - Fri: 8 a.m. - 4:30 p.m.

Resources

[IT Services Homepage](#)

[How-To / FAQ](#)

[Support Forms](#)

Contact Info:

support@stetson.edu

386 822-7217

I.W.E.R.

INSTITUTE FOR WATER AND ENVIRONMENTAL RESILIENCE



Our Service

Leading Stetson University in tackling complex environmental challenges, IWER is dedicated to providing policy options to protect natural resources in Central Florida and beyond. IWER implements solutions with government agencies, not-for-profit organizations, local businesses, and other community stakeholders in conjunction with student and faculty research

Location

Sandra Stetson Aquatic Center
2636 Alhambra Avenue,
DeLand

Resources

[Homepage](#)

[Senior Research Projects](#)

[IWER Field Station](#)

[Newsletter](#)

Contact Info:

386-822-7965

[Facebook](#)

[Instagram](#)

[Staff Directory](#)

MUSEUM OF ART AND SECOND STAGE THEATRE



Our Service

Located in the same shared space are the DeLand Museum of Art and Stetson's Second Stage Theatre. The museum is one of two DeLand locations where you can view various gallery exhibits for a small fee.

Stetson's Second Stage Theatre is the home of the Theatre Arts Department and the host of all of the department's wonderful productions.

These productions offer ample opportunities for involvement onstage and backstage, and are open to all Stetson students. Productions are free and cultural credit eligible for students!

Interested students should reach out to the creative arts office or Krista Franco at kfranco@stetson.edu

Location

600 N. Woodland Boulevard,
DeLand

Resources

[Museum of Art Homepage](#)

[Theatre Arts Homepage](#)

[Theatre Arts Instagram](#)

[Second Stage Facebook](#)

Contact Info:

[Museum of Art](#)

386-734-4371

contact@moartdeland.com

[Stetson Creative Arts](#)

(386) 822-7266

secondstage@stetson.edu

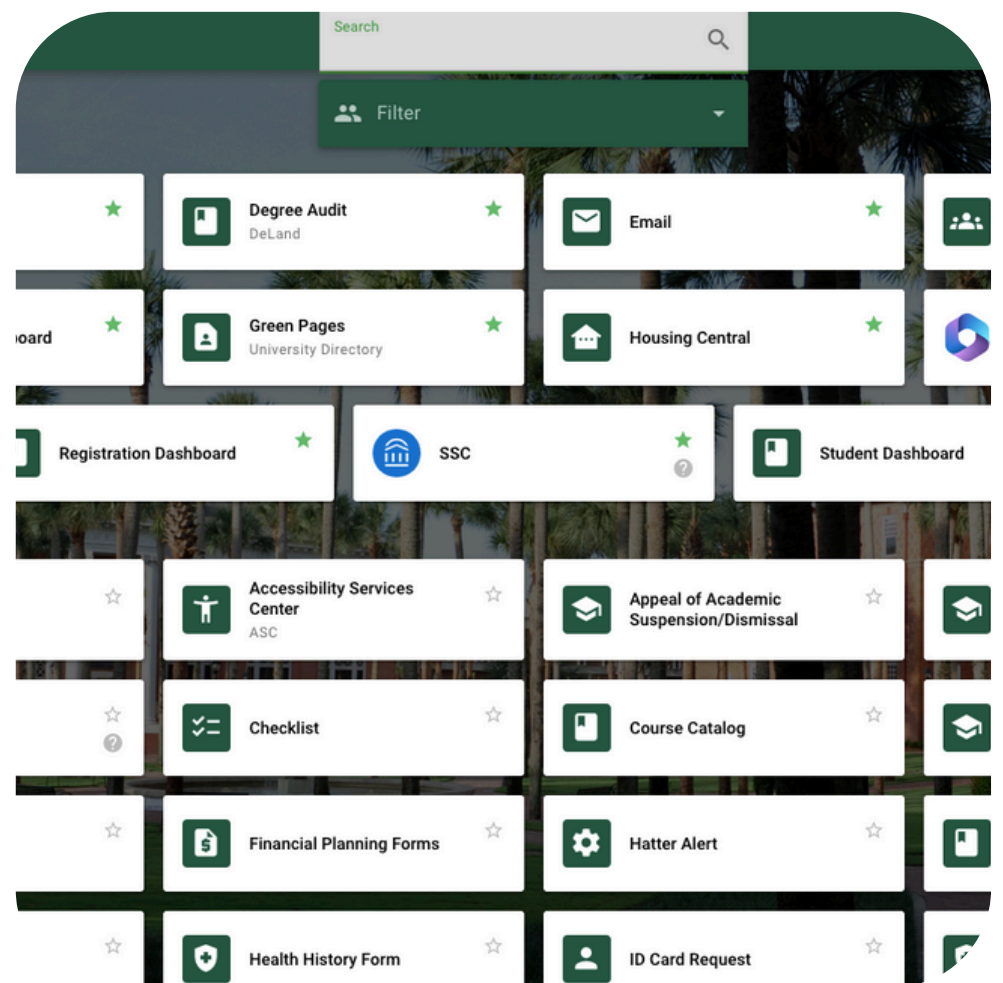
creativearts@stetson.edu

MYSTETSON PORTAL

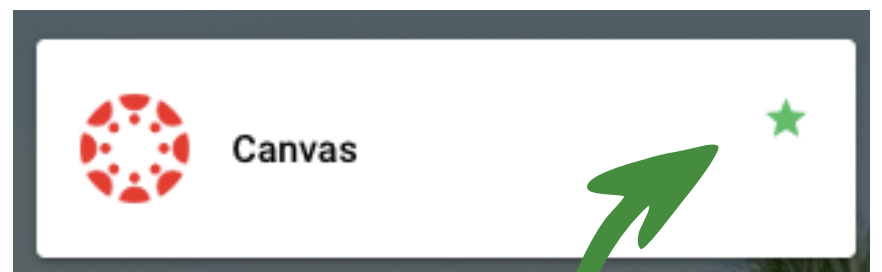
Our Service

Accessible from the moment students join the Stetson community, the myStetson Portal can be accessed with your Stetson email and password. Located within the portal are many resources including HatterJobs, Housing Central, Course Search/Catalog, Financial Aid Dashboard, Student Dashboard, School Dude Maintenance requests, Canvas, Email, Engage, TurboVote, Meal Plans, Online Bill Paying and more!

Take a peak next time you're in your myStetson Portal at all the features and functions it has to offer!



Resources



Too many items? Star your most commonly used tools on your portal to keep them closer to the top and easier to access!

Located At:

my.stetson.edu

P.A.C.T.

PEER ADVISORY
COUNCIL FOR TITLE IX



Our Service

PACT are student activists, educators, and advocates working toward creating a culture of consent on Stetson's campus. This means encouraging and embodying the values of gender equity, inclusivity, healthy relationships, openness, boldness, and compassion. With the ultimate goal is to end domestic/dating violence, sexual assault, and stalking on campus.

Location

Located in the Hollis Center
Resource Center

Resources

[Homepage](#)

[PACT Resources](#)

[PACT Programming](#)

Contact Info:

ssmith47@stetson.edu

Instagram
[@stetsonpact](#)

PEER LEADERSHIP



Our Service

Here at Stetson, there are so many ways to not only get involved, but also to become a campus leader! Peer Leadership is an umbrella term for the student organizations that are dedicated to students helping other students. By becoming a Peer Leader, students gain valuable experience and insight into management, organization, communication, conflict resolution and team work! Some available positions include Resident Assistants, Hatter Productions, Homecoming Committee, Student Ambassadors, Environmental Fellows, WELL Team, Club Sports Council, Student Government Association, Writing Center Staff and Many More!

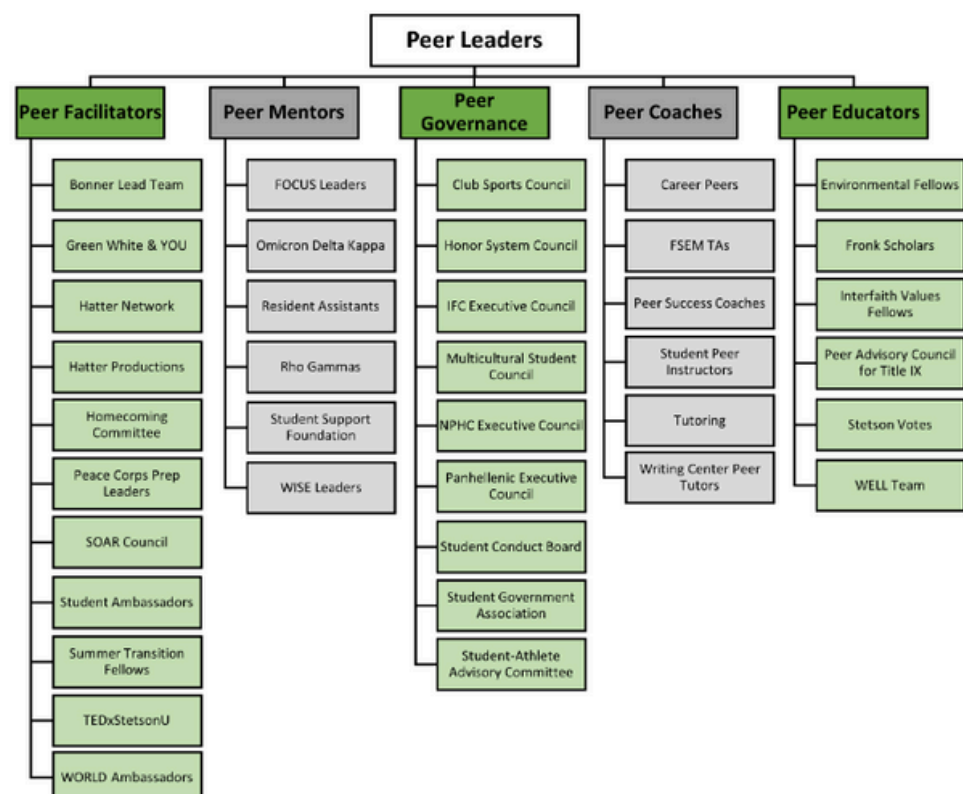
Resources

Homepage

Explore the homepage to view the entire list of peer leadership opportunities!

Engage

Check out Engage to see some of these organizations and many more ways to get involved on campus!



PUBLIC SAFETY



Our Service

Stetson University's Public Safety is committed to providing the campus community with a safe environment, allowing for an enjoyable experience for students, faculty and staff.

The Public Safety team is available 24 hours a day, seven days a week, all year round.

Location

Public Safety Office
405 N Amelia Avenue

Resources

[Homepage](#)

[Vehicle Registration](#)

[Emergency Response Guide](#)

[Hatter Alert](#)

[Safe Ride](#)

Don't walk alone after hours!

- Medical Escorts
- Late Night Transports
- Available via phone call

Contact Info:

[File a Report](#)

386 822-7300

OFFICE OF THE REGISTRAR



Our Service

The Office of the Registrar works collaboratively as part of the One Stop Office to support the academic mission of the university. They ensure the accuracy, integrity and security of student academic records and provide information about registration, academic records and degrees.

Location

Located as a part of the Stetson One Stop Office in the Rinker Welcome Center.

Hours

OneStop Office Hours

Monday - Friday:
8:00 a.m. - 4:30 p.m.

Resources

[Registrar Homepage](#)

[Stetson OneStop Page](#)

[Student Information](#)

[Undergraduate Course Catalog](#)

[Academic Calendar](#)

Contact Info:

registrar@stetson.edu

386 822-7140

OFFICE OF RELIGIOUS & SPIRITUAL LIFE



Our Service

RSL helps our community to celebrate our shared humanity, illuminate our collective faiths, and empower students to lead lives of meaning. Our office assists students in finding their people, place, and purpose.

Location

Located on the south end of the CUB near the DOS suite

Interfaith Prayer & Meditation Room
Available in the Cross-Cultural Center for private and communal reflection with foot washing stations nearby. They are accessible by key card between 8am-12am.

Contact Info

rsl@stetson.edu

386-822-8706

Resources

[Homepage](#)

[RSL Services](#)

[Student Faith Organizations](#)

[Stetson Hillel](#)

The Ginsburg Hillel House is a hub for our Jewish students where weekly dinners and other events are held for connection and community.

[Interfaith Values Fellows](#)

Student workers who help to support RSL events and plan programs to foster interfaith engagement across the university. Anyone undergraduate student can apply.

[Lettie Pate WhiteHead Scholars](#)

A leadership program and need based scholarship giving young Christian women the opportunity to deepen and integrate their education through required work and service along with guided goal-setting and reflection each academic year.

[Meet with the Chaplain](#)

The University Chaplain is a confidential resource for all regardless of spiritual beliefs and provides support during times of personal or community loss.

REPORT IT FORM



Our Service

If You See Something, Say Something

The Stetson Report It form is a way to inform the staff of the university of anything suspicious, dangerous or concerning. There are a variety of circumstances that may warrant reporting whether it be a mysterious stranger around your residence hall, a case of academic dishonesty, concern for a friend in a toxic relationship, and more.

There are a variety of ways to report an incident. Some avenues are more disciplinary and others are support or education based.

If you're not sure who a report should go to, simply file a general Report It form, and Stetson staff will determine the best course of action.

Resources

[Homepage](#)

Check out the homepage to learn about the different avenues for reporting like BEST, HattersCare, ReportIt, EthicsPoint and Honors Council. Or use the links below to go straight to the form you need!

[FAQ's](#)

[Report It](#)

[Title IX](#)

[HattersCare](#)

[EthicsPoint](#)

[Honor Council](#)

[BEST Team](#)

[Accessibility Concern](#)

[Summer Camps and Conferences](#)

RESIDENTIAL LIVING & LEARNING



Our Service

For all of your housing needs. The mission of Residential Living & Learning at Stetson University is to foster inclusive and engaging communities where learning, living, and Stetson's values converge. Students living on-campus are provided the opportunity to learn, grow, and develop so they can significantly engage in their communities throughout their lives.

Location

University Hall
644 N Woodland Blvd,
DeLand

Resources

[RL&L Homepage](#)

[Current Student Resources](#)

[Meal Plans & Hatterbucks](#)

[RL&L Facebook](#)

[RL&L Instagram](#)

** Log in to Housing Central via your MyStetson portal to view and submit important forms like Housing Applications and Requests for Animal-in-Residence! **

Contact Info:

reslife@stetson.edu

386 822-7201

[Staff Directory](#)

[RA Information](#)

STETSON VOTES

Our Service

One of the most important and most fundamental aspects of being an engaged citizen is participation in our democracy through voting.

StetsonVotes is the non-partisan, student led, one-stop site for all your voting questions and resources!

In order to vote in elections, there are three things that you need to do:

Step 1: Get Registered

Step 2: Get Prepared

Step 3: Go Vote!



Resources

[StetsonVotes Homepage](#)

[Step 1: Get Registered](#)

[Step 2: Get Prepared](#)

[Step 3: Go Vote](#)

[Volunteer](#)

Contact Info:

Instagram:
[@stetsonvotes](#)

[Meet the Team](#)

[Contact Page](#)



TITLE IX OFFICE

Our Service

Title IX is a federal law that prohibits sex discrimination in education. The law forbids sex discrimination in all university student services and academic programs. Prohibited conduct includes, but is not limited to, sexual harassment, dating violence, domestic violence, and stalking. Support for victims of these actions is available.

It is the policy of Stetson University not to discriminate on the basis of sex, disability, race, age, religion, color, national or ethnic origin, ancestry, marital status, veteran status, sexual orientation, gender identity, gender expression, genetic information, physical characteristics or any other category protected by federal, state or local law

Resources

[Title IX Homepage](#)

[FAQ's about Title IX: Equality, Safety and Awareness](#)

[Reporting Options](#)

Contact Info:

titleix@stetson.edu

386 822-7960

[Leadership Team](#)

WELL TEAM



Our Service

The WELL Team (Wellness Educators for Life-long Learning) are Stetson University's premier peer education group, educating students on healthy lifestyles and strong decision-making skills. WELL Team members are trained peer educators volunteering their time to actively promote healthy behaviors to fellow students. Health topics include healthy relationship, alcohol and other drugs, sexual health, sexual assault prevention, nutrition, exercise, stress management and sleep management.

Location

Operating from the Resource Center of the Hollis Center

Resources

[Homepage](#)

[Wellness and Recreation Programs](#)

[WELL Team Instagram](#)

@thewellteam

Contact Info:

To get involved with the WELL Team:

lahancock@stetson.edu

386 822-7237

WORLD CENTER



Our Service

WORLD (World Outreach, Research, Learning and Development): aims to help students embrace intercultural competence and global citizenship by offering quality study abroad programs and providing support services for international students and scholars. If you are interested in study abroad, faculty led travel programs, or scholarships to support international academic programs, WORLD is here to help!

Location

WORLD Center
635 N. Bert Fish Drive

Resources

[Homepage](#)

[WORLD Portal](#)

[Study Abroad](#)

[Peer Advisors](#)

[Affording Study Abroad](#)

[International Student Services](#)

[Peace Corps Prep program](#)

Contact Info:

[Contact Page](#)

world@stetson.edu

386-822-8165